



VERTICAL FIXING KIT
KSFx60VPL
INSTRUCTION MANUAL

The Sail Loft, Unit 16, Sandford Lane Industrial Estate, Wareham, Dorset BH20 4DY

Phone: +44 (0)1929 554308
www.shade-solutions.com

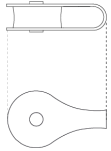


Email: info@kempsails.com
www.kempsails.com

VERTICAL FIXING KIT

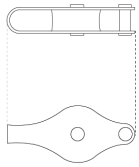
The vertical fixing kits ensure the shade can be fitted as close to the wall as possible. The pulley system runs vertically down the post or wall, keeping the shade corner closer to the anchor point. Designed for ease of use and removal, the vertical fixing kit can be attached and removed easily from ground level without the need for a ladder. Comprising of three spliced lengths of rope and attached to pulleys and carabines as shown, this kit is suitable for shades where easy removal is required on a regular or even a daily basis.

Please note: post and wall anchor fittings are not included but can be purchased separately.



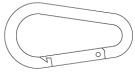
1 x Pulley Block 2 (PLAIN BLOCK)

ATTACHED TO ROPE 2
KSFXTB2



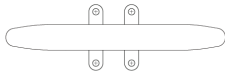
1 x Pulley Block 1 (WITH BECKETT)

ATTACHED TO ROPE 1
KSFXTB1



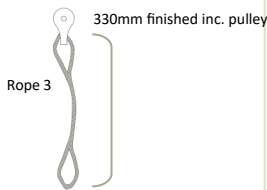
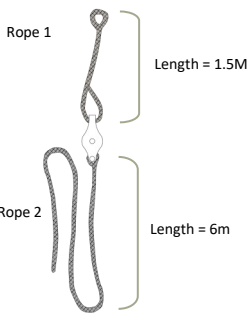
1 x Carbine Hook

KSFXTB060



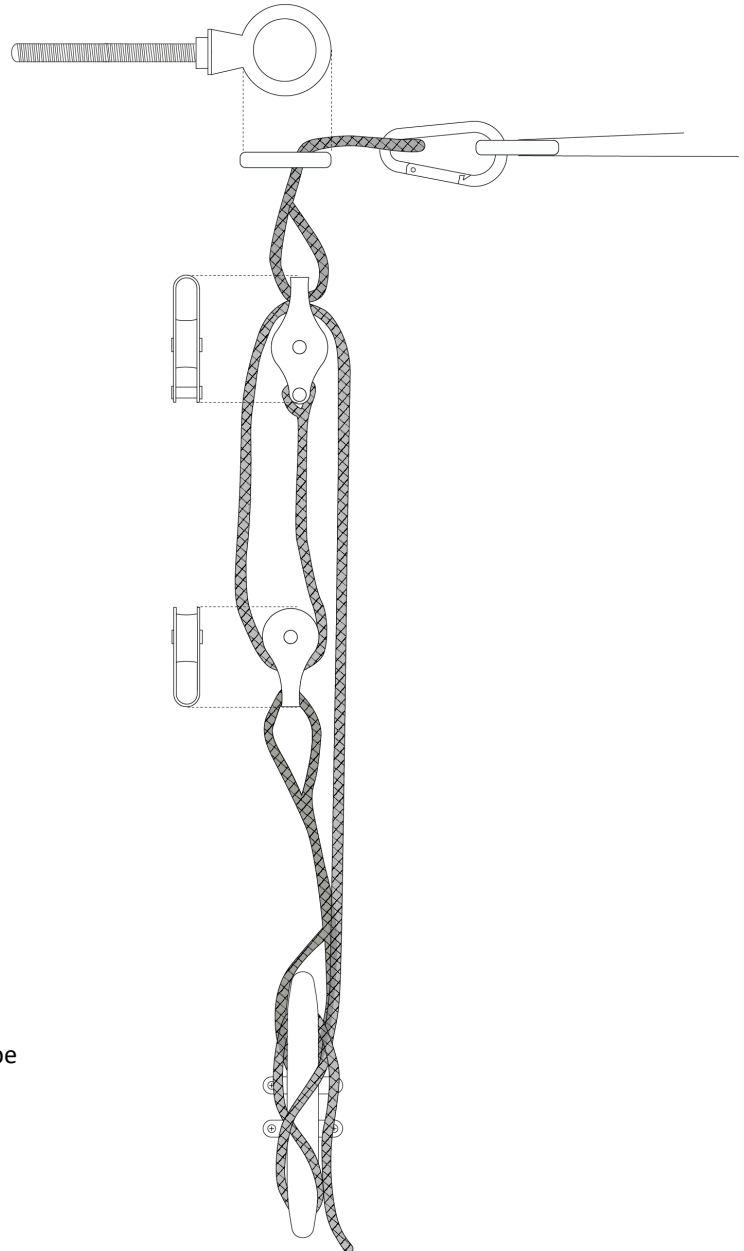
1 x Cross End Cleat

KSFXTB14D



3 lengths of 6mm Braided Rope

KSFXTB5MWW





CORDLESS DRILL



HANDHELD PLIERS

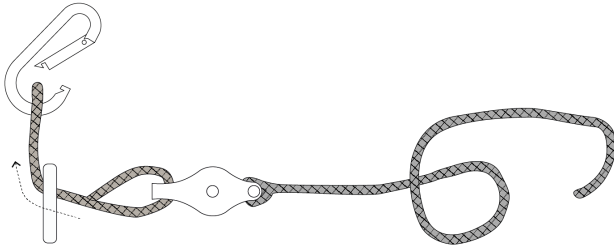


SCREW DRIVER



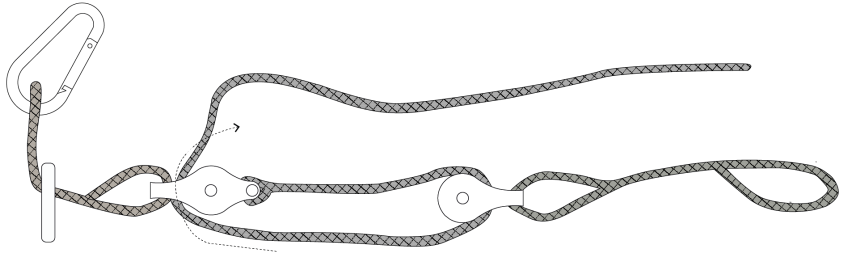
-STEP 1-

Thread rope 1 through anchorage fixing and attach carabine hook to loop, holding the rope in place.



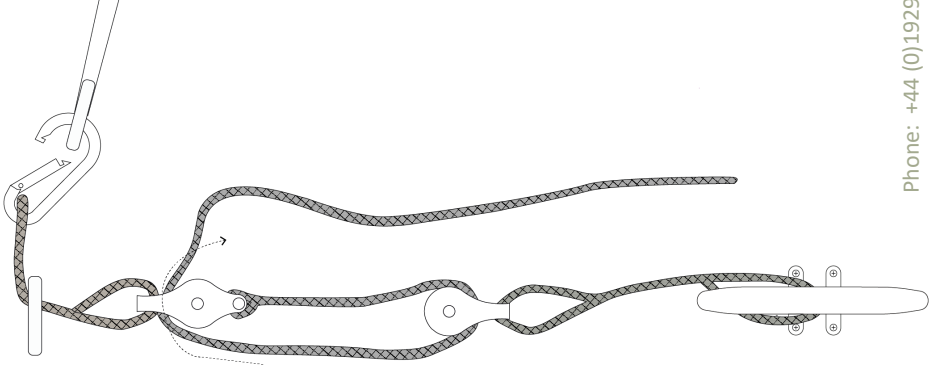
-STEP 2-

Thread block 2 onto rope one. Then take end of rope one back up and through pulley.



-STEP 3-

Fix cross end cleat to chosen point trapping loop on rope 2 between cleat and surface.



4 X ↑

-STEP 4-

Secure Shade Sail to carbine hook, then pull on loose end of rope 1 to tension shade. Secure in a figure of 8 around cleat.

